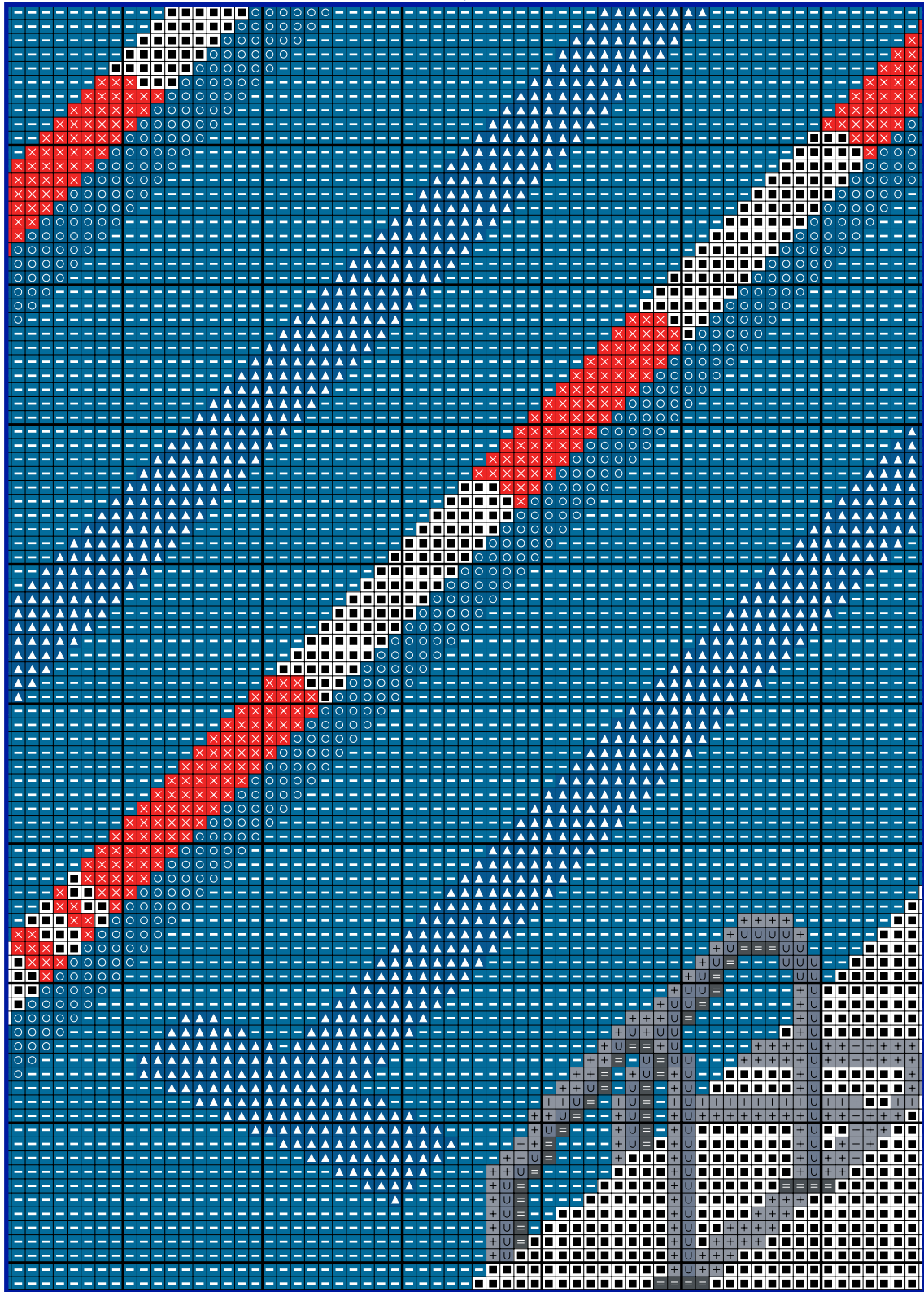


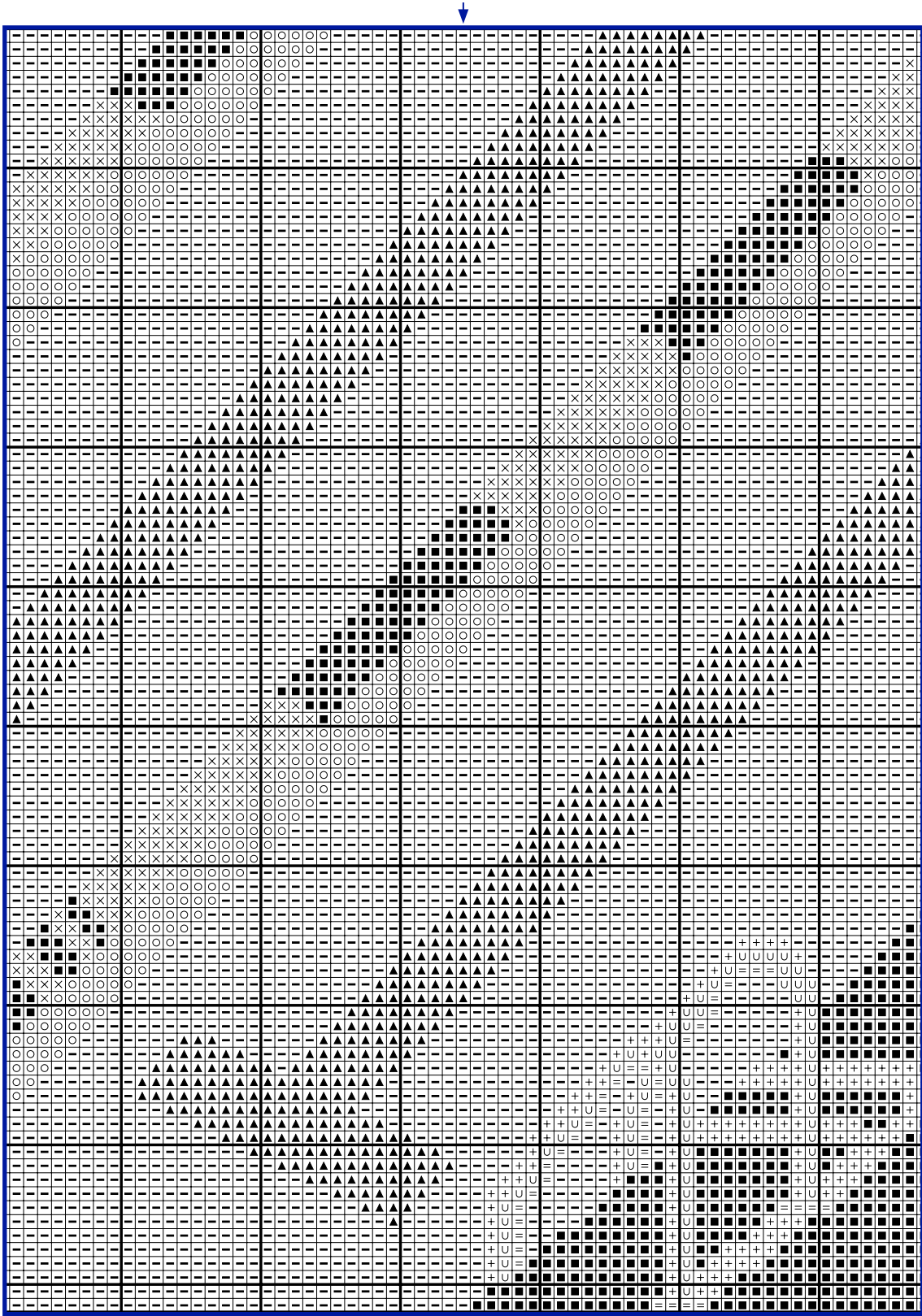
SWIMMING POOL LA PISCINE

COLOURED TAPESTRY CHART
DIAGRAMME TAPISSERIE EN COULEURS



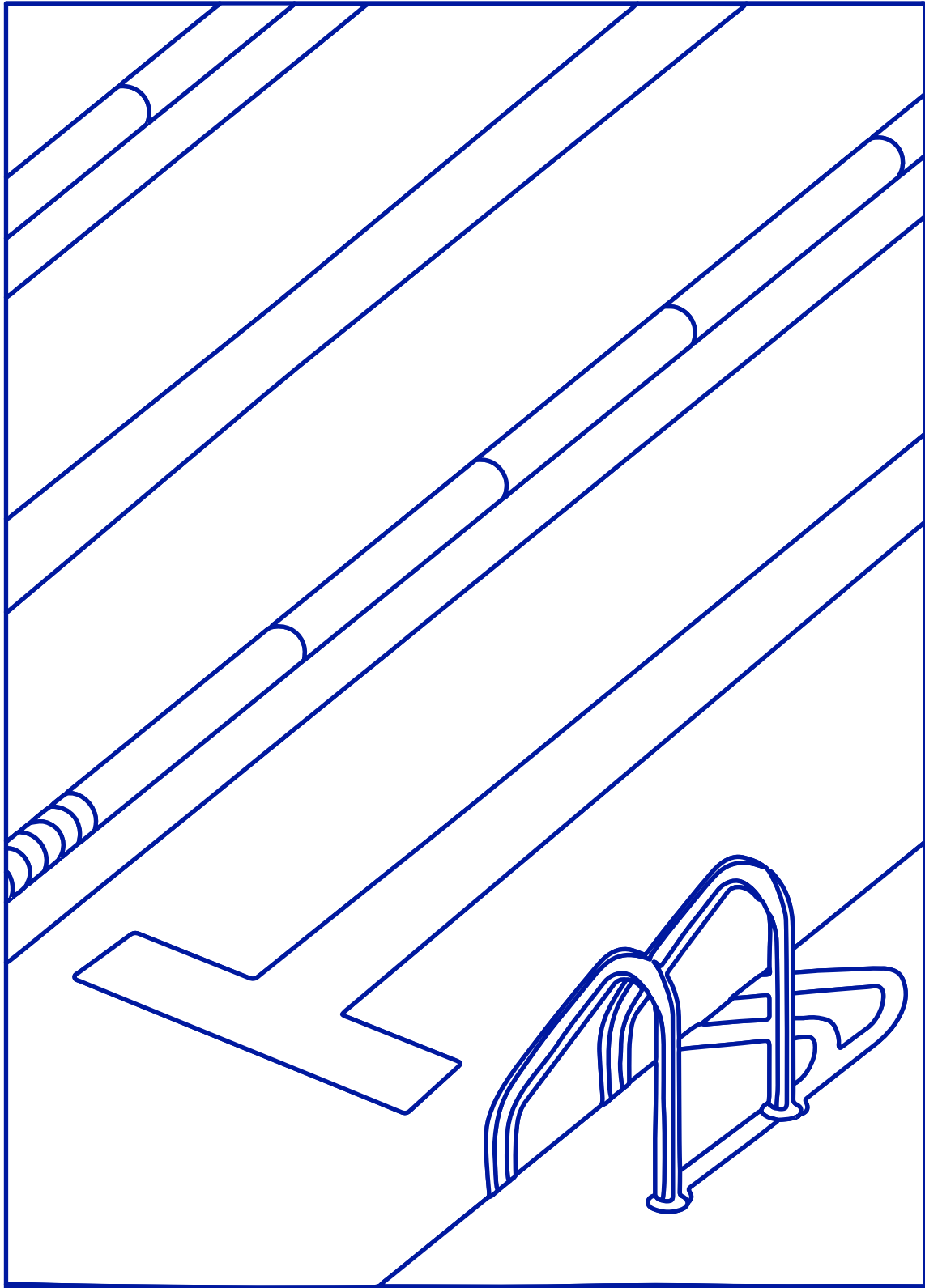
SWIMMING POOL LA PISCINE

TAPESTRY CHART
DIAGRAMME TAPISSERIE



SWIMMING POOL LA PISCINE

TAPESTRY CHART
DIAGRAMME TAPISSERIE



SWIMMING POOL LA PISCINE

INSTRUCTIONS

TOOL KIT / FOURNITURES

DMC RETORS MAT SOFT COTTON ART. 89

TAPESTRY NEEDLE / AIGUILLE TAPISSERIE

12 COUNT (4.6 PTS/CM) MONO BLANK TAPESTRY NEEDLEPOINT CANVAS / CANEVAS MONO BLANK

















SCISSORS / CISEAUX

TRANSFER PEN (OPTIONAL) / STYLO TRANSFERT (EN OPTION)

ACRYLIC PAINT (OPTIONAL) / PEINTURE ACRYLIQUE (EN OPTION)

DESIGN SIZE / DIMENSIONS DESSIN 15 X 21 CM / 5,90" X 8,26"

COLOUR / COULEURS

SYMBOL SYMBOLE	COLOUR COULEUR	N° SKEINS* N° D'ÉCHEVETTES*	SYMBOL SYMBOLE	COLOUR COULEUR	N° SKEINS* N° D'ÉCHEVETTES*
 	Blanc	x1	 	2123	x1
 	2349	x1	 	2170	x1
 	2826	x3	 	2125	x1
 	2825	x1	 	2413	x1

STITCHES / POINTS



Half point / Demi point

* Based on stitching with the number of strands shown above, onto 12ct. / * Basé sur le nombre de brins préconisé au-dessus, sur 4.6pts/cm.

IMAGE TRANSFER / TRANSFERT D'IMAGES

You can also draw or paint this design onto your blank needlepoint canvas using the illustration provided, a transfer pen and acrylic paints.

- Trace your design onto your canvas using a fabric pen or a disappearing ink pen. Taping your needlepoint canvas to the design can help keep it in place.
- Optional: Following the outline you traced, colour in each section using your acrylic paint. Each intersection of the threads on your needlepoint canvas is where you will create a stitch, so make sure to designate each intersection a specific colour.

Top tip: you can use a toothpick, to unclog the needlepoint canvas if the holes become clogged up whilst painting.

Vous pouvez aussi peindre ce motif sur votre toile à canevas vierge à l'aide de l'image fournie et de peinture acrylique.

- Vous allez d'abord dessiner votre motif sur votre toile à canevas avec un crayon à tissu ou un stylo à encre effaçable. Coller votre toile sur l'image peut aider à la maintenir en place.
- En Option: En suivant les contours que vous avez tracés, coloriez chaque partie à l'aide de votre peinture acrylique. Chaque intersection de fils sur votre toile à canevas est l'endroit où vous ferez un point, alors faites attention à marquer chacune d'une couleur spécifique.

Astuce : vous pouvez utiliser un cure-dents pour déboucher les trous de la toile à canevas s'ils s'obstruent pendant que vous peignez.